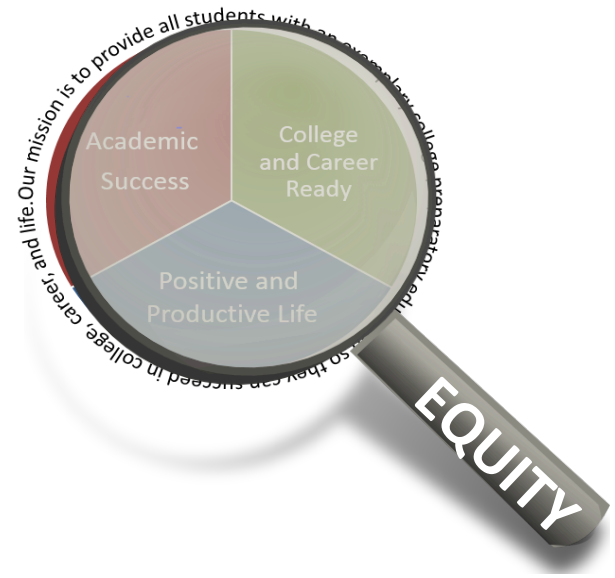




Special Needs PTSA

October 5, 2016



**SPECIAL
EDUCATION**
EQUITY AND ACCESS FOR ALL





OEO Themes: Systems Barriers

1. Greater Options
2. Communication
3. Transparency
4. Concerns about adversarial process



WISM Feedback

Question	Agree	Disagree
Q08. I was given information about organizations that offer support for parents of students with disabilities.	42%	58%
Q09. I have been asked for my opinion about how well special education services are meeting my child's needs.	59%	41%
Q25. The School provides information on agencies that can assist my child in the transition from school.	43%	57%



Responses/Next Steps: System Barriers

Office of the Education Ombuds

- Presentations
- Support Materials

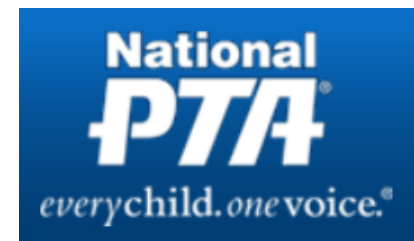


PTSA

- Special Needs PTSA
- School PTSAs



Bellevue Special Needs PTSA



Sound Options:

- Minimize conflict
- Change management



OEO Themes: Professional Support

1. Professional Development
2. Turnover



WISM Feedback

Question	Agree	Disagree
Q22. The School offers parents training about special education issues.	41%	59%

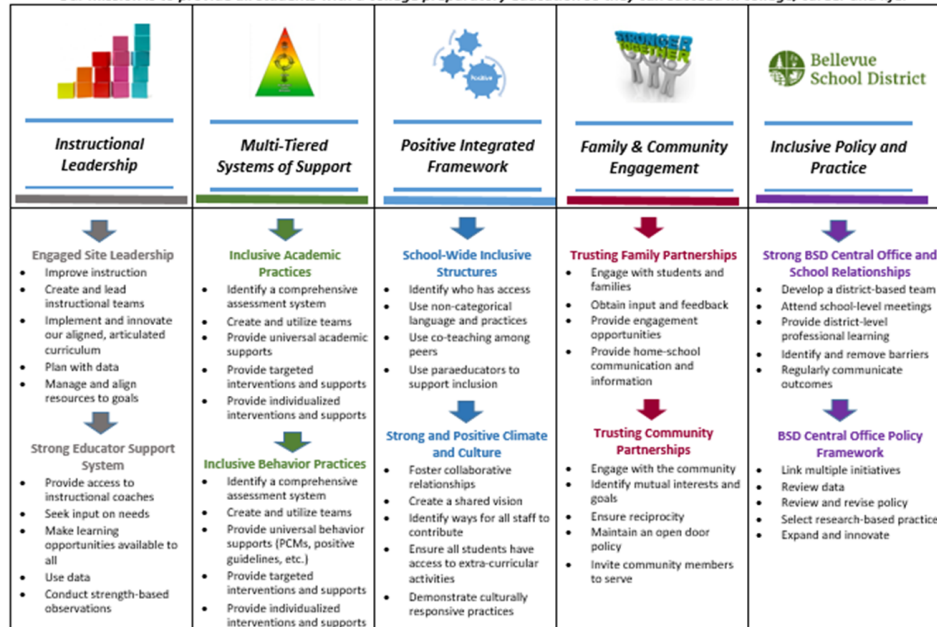
The development of a co-teaching model, currently in initial stages, was discussed during the Opening Session on February 24, 2016, and staff at buildings expressed a commitment to inclusive practices.



Responses/Next Steps: Professional Support

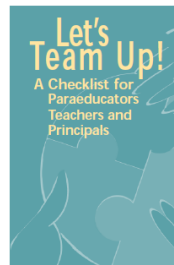
SWIFT: Equity Based Inclusion

Our mission is to provide all students with a college preparatory education so they can succeed in college, career and life.



Let's Team Up!

- Paraeducators
- Teachers
- Administrators



CAST: Center for Applied Special Technology

CAST | Until learning has no limits™

National Center on Universal Design for Learning





OEO Themes: Attitude and Stigma



1. Parents as partners
2. Attitudinal shifts
3. Student self-esteem, positive identity



WISM Feedback

Question	Agree	Disagree
Q10. My child's evaluation report is written in terms I understand.	90%	10%
Q13. Teachers treat me as a team member.	85%	15%
Q26. The School explains what options parents have if they disagree with a decision of the school.	50%	50%

6

It was also noted that, of the parents who responded to the parent survey, 96% agreed that teachers and administrators respect their cultural heritage (Item Q17).



Responses/Next Steps: Attitude and Stigma



School Board Priorities:

- Inclusion
- Racial Equity
- Culture of Service

AVID

- Trained teacher from each comprehensive high school
- AVID site team
- Using AVID strategies in instruction

District Initiatives

Bullying Prevention
College Preparedness
K-12 Computer Science
Green Schools
Growth & Planning
High School Start Time
Instructional Initiatives
Parent Satisfaction
Social & Emotional Learning



Questions?



For additional information regarding this presentation contact:

Heather Edlund – Executive Director Special Education
Email: edlundh@bsd405.org
Phone: (425)456-4156

The Bellevue School District Mission:

- ❖ To provide all students with an exemplary college preparatory education so they can succeed in college, career and life.